

This short guide will walk you through how to install LeoCAD onto your computer and direct you to add a hotkey for the Full Screen view to prevent potential issues later on.

1. Go to <https://www.leocad.org/download.html> and click the download button appropriate for your operating system.

Downloads

LeoCAD is very easy to install, and it is available for all major operating systems. In the sections below, you will find detailed instructions on how to download and install the application for each operating system.

Windows

Click the button below to download the latest version of the LeoCAD installer. Once the download is complete, run the installer and follow the installation instructions.

[Download LeoCAD for Windows](#)

Linux

Click the button below to download the latest LeoCAD AppImage. Once the download is complete, simply run the file. If you prefer to compile it yourself, go to the [GitHub Releases Page](#) and download the latest source code archive.

[Download LeoCAD for Linux](#)

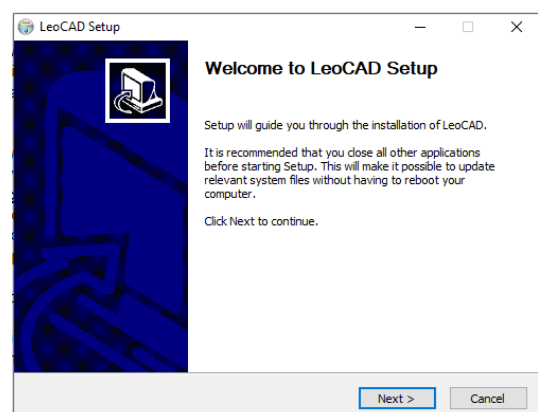
macOS

Click the button below to download the latest version of the LeoCAD DMG package. Once the download is complete, open the package and drag its contents to your "Applications" folder.

[Download LeoCAD for macOS](#)

© LeoCAD.org

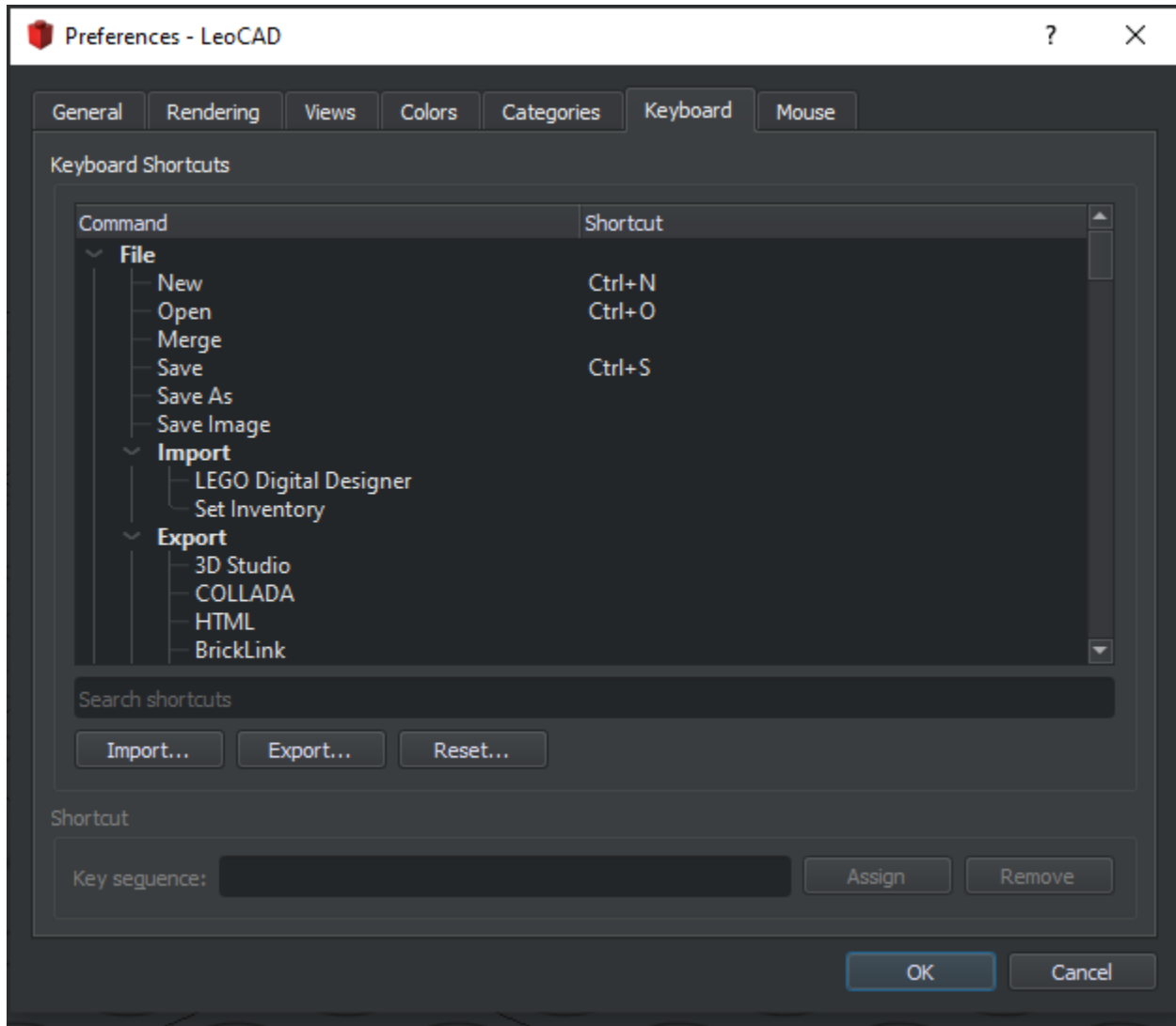
2. Open the downloaded file
 - a. A message from your computer may appear as a warning about installing the software. The way the program installs, prompts this warning to appear, however, you can continue opening the file without worry.
3. Navigate through the Setup Wizard clicking "Next" on each page until reaching the final page when the button will change to "Install". Adjust where the program is saved if desired and click "Install"



4. LeoCAD should open automatically after the install is complete, if not, open the program.

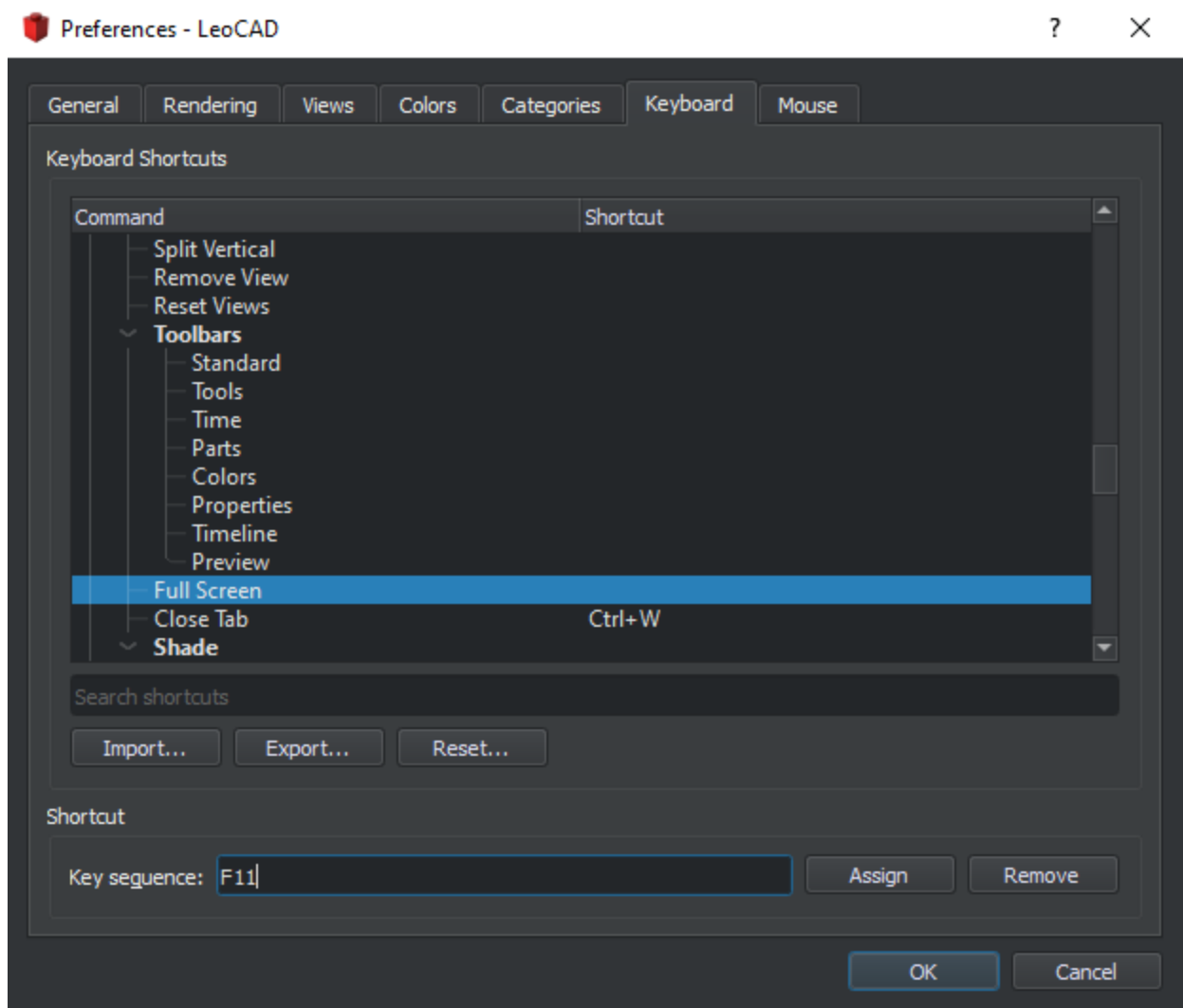
We will now add a hotkey to open and close the full screen view as it is difficult to escape full screen without a hotkey.

5. Click on the “View” tab in the top-left corner of the screen
 - a. Select the “Preferences” item from the dropdown menu
 - b. Navigate to the “Keyboard” tab in the new window that appears
 - i. You should now have a pop-up box like this:



6. Scroll down until you find the “Full Screen” command (a little past half-way down)

7. Select the “Full Screen” command and click into the “Key sequence” box before pressing the F11 key



8. Click “Assign” and then press “OK”

You now have LeoCAD installed on your computer and added a hotkey to enter and escape from full screen if desired.